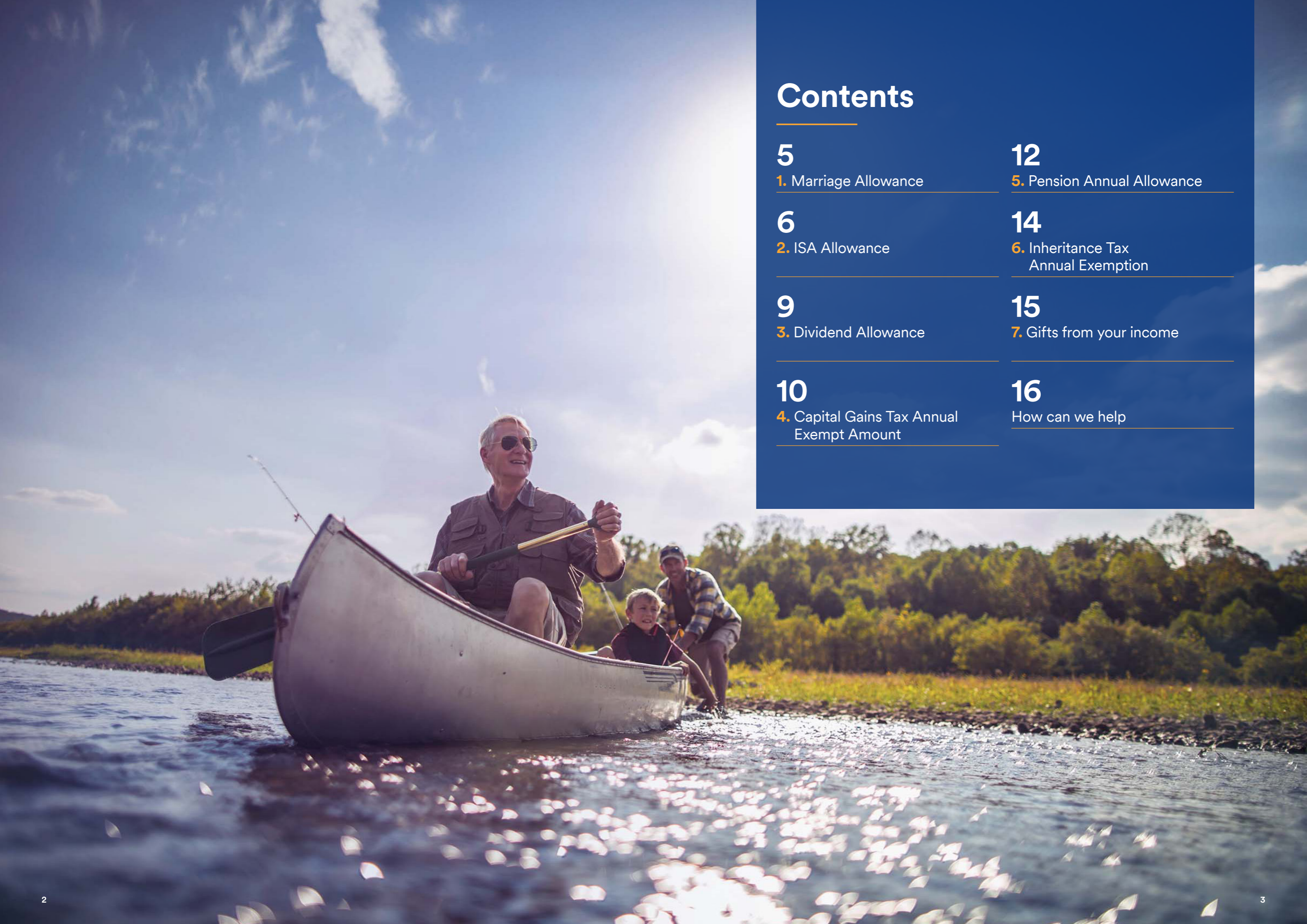




A guide to
annual tax allowances



Contents

5

1. Marriage Allowance

6

2. ISA Allowance

9

3. Dividend Allowance

10

4. Capital Gains Tax Annual Exempt Amount

12

5. Pension Annual Allowance

14

6. Inheritance Tax Annual Exemption

15

7. Gifts from your income

16

How can we help

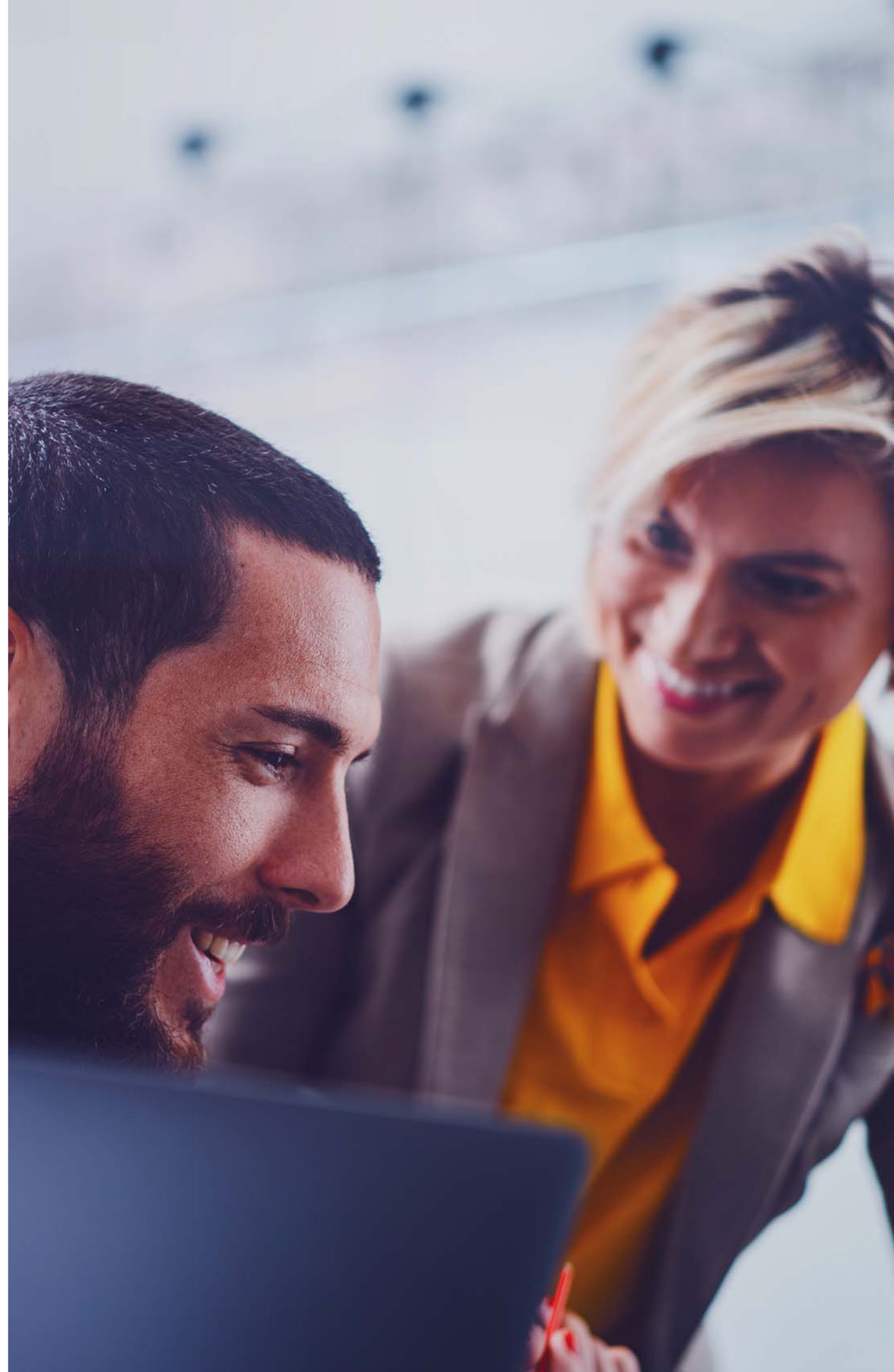
7 allowances to make use of before 5 April 2024

The 2023/24 tax year ends on
Friday 5 April.

After this date, many allowances will reset, so it could be your last chance to use some of them. Making the most of allowances can reduce your tax liability and help your money to go further.

Reviewing your finances now could mean you discover an allowance you could make use of before the deadline.

Here are seven allowances to consider using before the tax year ends.



1. Marriage Allowance

2022/23 allowance: up to £1,260

Using your Marriage Allowance could reduce your Income Tax bill by £252.

The Marriage Allowance allows a spouse or civil partner to give some of their unused Personal Allowance to their partner.

The Personal Allowance is the amount of income you can receive before Income Tax is due. For the 2023/24 tax year, it is £12,570.

If you or your partner has an income below this threshold, the person with the lower income may be able to pass on up to £1,260 of their Personal Allowance. This effectively increases the Personal Allowance of their partner to £13,830. This could then reduce their tax bill for the 2023/24 tax year by £252.

To be eligible you must be married or in a civil partnership. The partner with the higher income must also pay Income Tax at the basic rate in England, Wales, or Northern Ireland. This usually means their income is between £12,571 and £50,270.

In Scotland, the higher income earner must pay the Scottish starter, basic, or intermediate rate of Income Tax.

You can backdate the Marriage Allowance for up to four years. So, you have until 5 April 2024 to use your entitlement from the 2019/20 tax year.

Please note: HM Revenue and Customs practice and the law relating to taxation are complex and subject to individual circumstances and changes which cannot be foreseen.



ISAs are an important part of saving and investing for many people.

According to [official statistics](#), around 12 million adults subscribed to an ISA in 2020/21. During that year, around £72 billion was added to ISAs. In total, £687 billion, was held in adult ISAs.

2. ISA Allowance

2023/24 allowance: £20,000

An ISA provides a tax-efficient way to save and invest.

The interest or returns you earn on money held in an ISA are free of both Income and Capital Gains Tax (CGT). For the current tax year, you can add up to £20,000 to an ISA.

You can spread your annual allowance across several different ISA types.

For adults, there are five different types of ISA that you can contribute to:

- 1. Cash ISA:** A Cash ISA operates similarly to a savings account, but the interest you earn is paid free of Income Tax and CGT. Some Cash ISAs are subject to restrictions, such as how much you can withdraw.
- 2. Stocks and Shares ISA:** Using a Stocks and Shares ISA allows you to invest in the stock markets and other assets. Returns are free of Income Tax and CGT. As with all investments, you should have a long-term outlook and understand your risk profile when using a Stocks and Shares ISA.
- 3. Lifetime ISA (LISA):** If you're aged between 18 and 39, you can open a LISA. A LISA can be a Cash or Stocks and Shares ISA. You will receive a 25% government bonus on your contributions. However, you will be penalised if you make a withdrawal before you turn 60 for any purpose other than buying your first home. The maximum amount you can place into a LISA each tax year is £4,000.
- 4. Innovative Finance ISA:** An Innovative Finance ISA is designed for peer-to-peer lending investments. Usually, these kinds of investments are higher risk than traditional alternatives, so are not appropriate for most investors.
- 5. Help to Buy ISA:** While you can no longer open a Help to Buy ISA, if you already have one, you can continue to contribute until November 2029. You can add up to £200 a month and the government will top up your savings by 25% (up to £3,000) when you buy your first home.

Personal Savings Allowance

You may also have a Personal Savings Allowance. This is the amount of interest you can earn without paying tax. The allowance depends on which Income Tax band you're in:

- £1,000 if you're a basic-rate taxpayer
- £500 if you're a higher-rate taxpayer.

You do not have a Personal Savings Allowance if you are an additional-rate taxpayer.

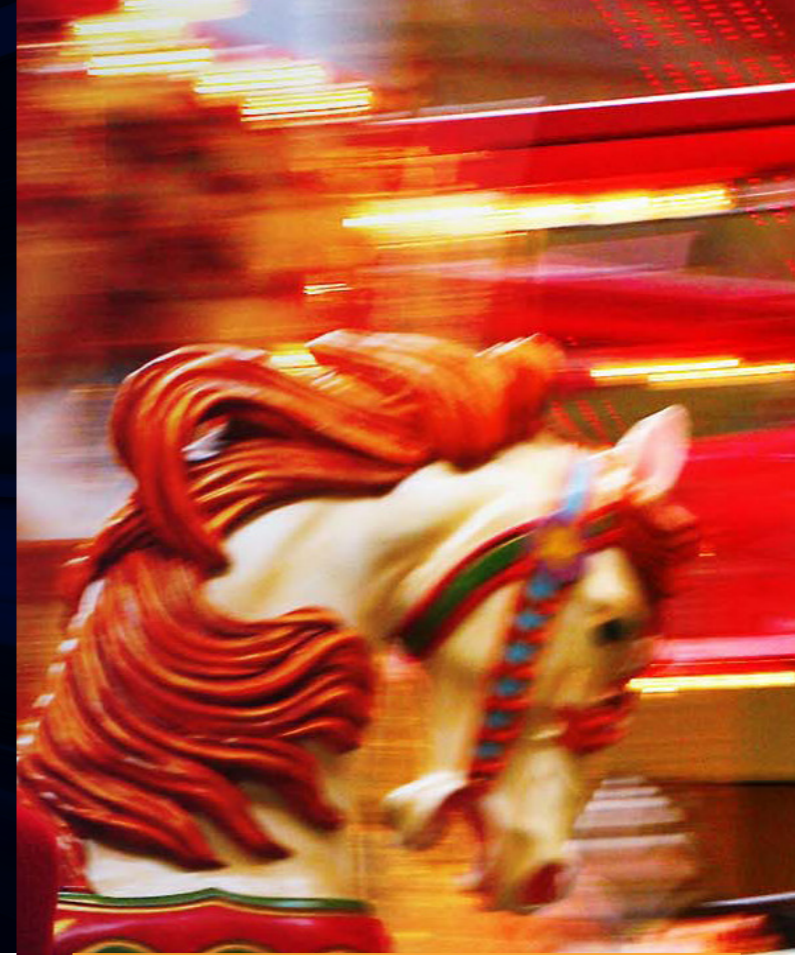


Saving for children through a Junior ISA (JISA)

A JISA is a tax-efficient way to save or invest for a child.

The annual subscription limit for 2023/24 is £9,000. The child can begin managing their ISA from 16, but they cannot withdraw money until they are 18.

Like their adult counterparts, interest and returns are free of Income and Capital Gains Tax. If you don't use the allowance before the end of the tax year, you will lose it.



3. Dividend Allowance

2023/24 allowance: £1,000

Using your Dividend Allowance could be a tax-efficient way to boost your income.

Dividends are paid by companies to share out the profits they have made. If you hold shares in a dividend-paying company, you will receive payments. The amount you receive will usually be dependent on performance and stock price.

You may also receive dividends if you own your own business. Many company directors draw a combination of salary and dividends from their business to maximise the tax efficiency of their income.

The Dividend Allowance means every individual can receive up to £1,000 in dividends without incurring tax. So, if you're a company director, you can pay yourself up to £1,000 in dividends from the business without paying any Dividend Tax.

How much tax you pay on dividends that exceed the allowance will depend on your Income Tax band:

- Basic rate: 8.75%
- Higher rate: 33.75%
- Additional rate: 39.35%

Should you choose a Cash or Stocks and Shares ISA?

Whether you should choose a Cash or Stocks and Shares ISA will depend on your goals and financial circumstances.

A Cash ISA may be appropriate if you have short-term goals in mind or are using it to build an emergency fund. However, as inflation is higher than interest rates, your savings could be losing value in real terms.

A Stocks and Shares ISA may be appropriate if you're saving with long-term goals in mind. While investment returns cannot be guaranteed, historically market returns over the long term have beat inflation by a significant margin. If you choose to invest, it's important you understand your risk profile and choose an option that is right for you.

Please note: An ISA is a medium to long term investment, which aims to increase the value of the money you invest for growth or income or both. The value of your investments and any income from them can fall as well as rise. You may not get back the amount you invested.

If you do not use your ISA allowance for the 2023/24 tax year, you will lose it.

In the 2022 autumn statement, chancellor Jeremy Hunt announced the Dividend Allowance would be reduced.

It has already been reduced for the 2023/24 tax year, from £2,000 to £1,000. It will be halved again next April, to £500.

If dividends form part of your income, your tax liability could rise in April 2024, and you should review your financial plan.

If you don't use your Dividend Allowance before the end of the tax year you will lose it.

If unused,
you can't carry forward the
CGT annual exemption.



4. Capital Gains Tax Annual Exempt Amount

2023/24 exempt amount: £6,000

Using your Capital Gains Tax annual exempt amount could save you money when you sell some assets.

Capital Gains Tax (CGT) is paid when you sell certain assets and make a profit. This may include stocks that aren't held in an ISA, a second property, or personal possessions worth more than £6,000 (excluding your car).

For the 2023/24 tax year, the CGT exempt amount means an individual can normally make gains of up to £6,000 before CGT is due.

In some cases, spreading out the disposal of assets across several tax years can help reduce your CGT liability. You may also want to plan with your partner to maximise both of your annual exempt amounts.

If you exceed this allowance, your rate of CGT will depend on other taxable income:

- Standard CGT rate: 18% on residential property, 10% on other assets
- Higher CGT rate: 28% on residential property, 20% on other assets.

If you're not sure if your assets could be liable for CGT or the tax rate you'd pay, please contact us.

The CGT annual exempt amount will fall from £6,000 to £3,000 for the 2024/25 tax year.

If you are disposing of assets, it's important to keep these changes in mind as they could affect your tax liability.

In some cases, selling assets before the annual exempt amount changes could make financial sense.

Please contact us if you have any questions.

5. Pension Annual Allowance

2023/24 allowance: up to £60,000

A pension is a tax-efficient way to save for your retirement. Using your Annual Allowance could help create financial security in your later years.

The Pension Annual Allowance is the maximum that you can pay into your pension each tax year while still benefitting from tax relief. This includes pension contributions made by your employer or other third parties.

In the 2023/24 tax year, the Annual Allowance is 100% of your annual earnings, up to £60,000, for most people.

However, there are two reasons why your Annual Allowance may be lower:

- 1 The **Tapered Annual Allowance** means if your threshold income is over £200,000 and your adjusted income is more than £260,000, your Annual Allowance will be reduced by £1 for every £2 your income exceeds these thresholds. It can be reduced by a maximum of £50,000. As a result, your Annual Allowance can be as low as £10,000.
- 2 If you have flexibly accessed your pension, you may be subject to the **Money Purchase Annual Allowance**. This reduces the amount you can tax-efficiently save into a pension to £10,000 each tax year.

It's important to know what your Annual Allowance is, so please contact us if you're unsure or have any questions.

Unused pension Annual Allowance can be carried forward for up to three tax years. You have until 5 April 2024 to make full use of your allowance from the 2020/21 tax year.

Please note: The value of investments and any income from them can fall as well as rise and you may not get back the original amount invested.

Past performance is not a guide to future performance and should not be relied upon.



Make use of your family's Annual Allowance

Tax relief makes saving into a pension an efficient choice. So, don't just use your own allowance, make use of your loved ones' too. It could help them create long-term financial security.

Even those without an income, including children, can contribute to a pension and benefit. Limits apply, so speak to your adviser before making any contributions.

Using your Annual Allowance could help create **financial security** in your later years.



6. Inheritance Tax Annual Exemption

2023/24 exemption: £3,000

If your estate could be liable for Inheritance Tax, the annual exemption means you can pass on a gift tax-free.

If you're concerned about Inheritance Tax (IHT), gifting to loved ones now can reduce the value of your estate and, so, the eventual bill.

However, not all gifts are immediately exempt from IHT. Some may be considered part of your estate for up to seven years. Taking advantage of gifts that are outside of your estate immediately can provide peace of mind.

Each year, your IHT annual exemption means you can pass on a tax-free amount. In 2023/24, this amount is £3,000. The limit applies per individual, so couples can gift up to £6,000 between them.

The exemption can be carried forward for one year.

Gifts small amounts

In addition to the annual exemption, you can gift small amounts (up to £250 per person) to as many people as you like.

7. Gifts from your income

The 2023/24 allowance is dependent on your disposable income.

Making gifts from your income could reduce your estate's Inheritance Tax bill.

If Inheritance Tax (IHT) is a concern, gifting from your income is another way to reduce a potential bill. However, these gifts need to be made regularly and must:

- Be made from your income
- Be part of your normal expenditure
- Leave you with sufficient income to maintain your current lifestyle.

This can be a useful way to offer financial support to loved ones. For example, you might pay the school fees of grandchildren or make regular deposits to pay for the living costs of your children.

If you want to take advantage of this, it's important to make sure your regular gifts have continued throughout the current tax year. You should also keep a careful record of gifts made under this exemption.

Gifts from your income must be made regularly. So, missing a gift might mean that HMRC doesn't deem the gifts "regular" so includes them in the value of your estate when you pass away.

Levels, bases of and reliefs from taxation may be subject to change and their value depends on the individual circumstances of the investor.

Please note: The Financial Conduct Authority does not regulate estate and tax planning.

Do you need to consider Inheritance Tax?

The standard Inheritance Tax (IHT) rate is 40%. If your estate could be liable, it's important to be proactive to maximise how much you pass on to your loved ones.

The nil-rate band for the 2023/24 tax year is £325,000. If the value of your entire estate doesn't exceed this threshold, no IHT will normally be due. If you will be leaving some properties, including your main home, to children or grandchildren, you can also use the residence nil-rate band. For the 2023/24 tax year, this is £175,000.

This means many people can leave up to £500,000 before IHT is due. If you're married or in a civil partnership, you can also pass on unused allowances to your partner. As a result, if you're planning as a couple, you could leave up to £1 million before you need to consider IHT.

If the value of your estate exceeds these thresholds, there are often steps you can take to mitigate an IHT bill, so please contact us to discuss your needs.

Get in touch with us to make the most of your 2023/2024 allowances.

Your adviser can help you make the most of your money. And help you put a financial plan in place for the years ahead.

 www.wealthprofessional.co.uk

This newsletter is for general information only and is not intended to be advice to any specific person. You are recommended to seek competent professional advice before taking or refraining from taking any action on the basis of the contents of this publication. The Financial Conduct Authority does not regulate tax advice, so it is outside the investment protection rules of the Financial Services and Markets Act and the Financial Services Compensation Scheme. The newsletter represents our understanding of law and HM Revenue & Customs practice. © Copyright DECEMBER 2023. All rights reserved.

2 Old Well Court, Wester Inch Business Park, Bathgate, EH48 2TQ Tel: 0131 600 0166 Fax: 0131 600 0167 This communication is for information purposes only and should not be taken as formal financial advice. Wealth Professional is a trading style of Medical & Professional CFP Ltd, an appointed representative of Best Practice IFA Group Limited, authorised and regulated by the Financial Conduct Authority., Registered in Scotland, number SC400522.